

Our vision

Recreational craft free from pollutants where you can enjoy life without disturbing exhaust gases and engine noise.

Commercial craft in city center who transports passengers, goods, garbage. Silently and efficiently 24 hours a day.



- **Mats Bjurefalk: CEO.**
Shipbuilding Eng. Has been developing companies and products for 35 years. Founder of the company Fasitet.
- **Pim Polesie:**
Lic Eng. Former CEO of Oxe Diesel, today product manager at Specma. Founder of Spectre Marine.
- **Nicolas Berner Wolf:**
Civ Eng. Teknisk physics. Background in wave energy and off-shore industry. Dev. Eng. at MoorLink
- **Börje Nilsson:**
Civ Eco. Communicator with background from branding, automotive and fashion.

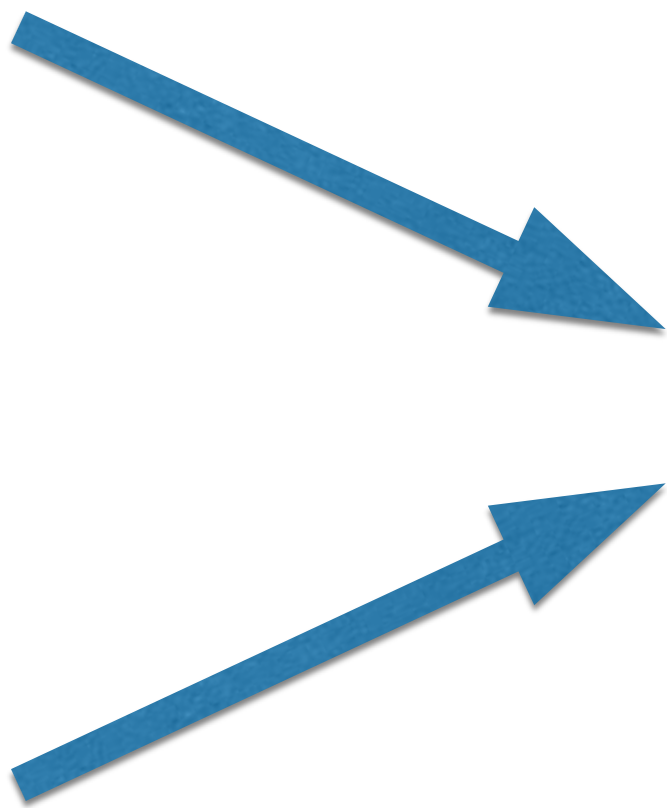
AVANT MARINE

Cooperation 1+1>2

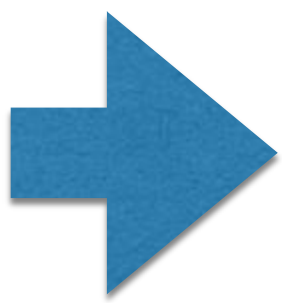


Avant

Regionen



Technology
Products
Knowledge



250 employees
>2000 Region emp
Brand
Regional knowledge





SeaLife ReInvented



SeaLife RelInvented



SeaLife ReInvented

A AVANT MARINE

Motorbuller, mekaniskt buller, stomljud skrov från inombordare och slag i vattnet från snabbgående båtar



Fossilmotor

- **Motortyp, Bensin, Diesel, Inombordare, Utombordare, (tändkula)**
- **Hastighet**
- **Varvtal**
- **Propellerljud, kavitation**
- **Drev, mekaniskt slammer**
- **Stomljud**
- **Material. Plast, aluminium, trä**
- **Skrov / Motor inte tunade. Passar inte ihop**
- **Ålder**
- 8 • **Vind i mast,**



Vidfamne vs modern båt

Beteende

Attitydförändring

Resurslöseri



Goda exempel

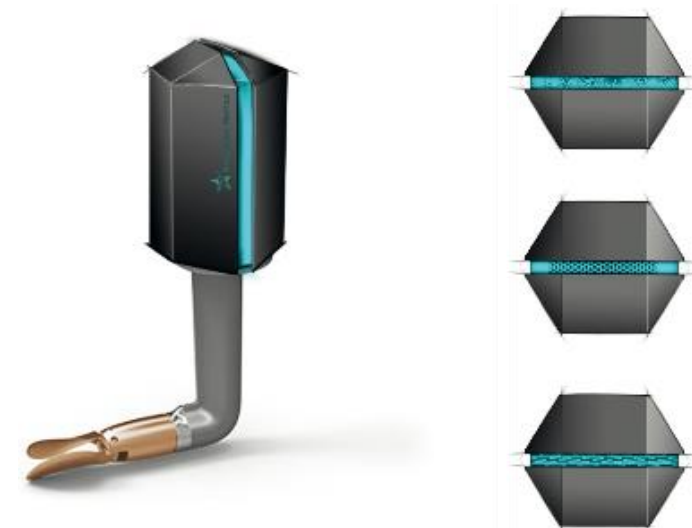


De 4 HÖRNSTENARNA. Holistiskt tänk

SKAPA ENERGI LAGRA ENERGI



FÖRBRUKA ENERGI



OPTIMERAT drivsystem



Det finns elbåtar!



Fördelar el

- **”Har framtiden för sig”**
- **Energieffektiv, över 90%**
- **Minimalt Underhåll.**
- **Tyst**
- **Propellerladdning**
- **Vibrationsfri, endast rotationsrörelse.**
- **Vridstark, arbetar vid lägre varvtal**
- **Flertal laddsystem**

A AVANT MARINE

- **Nätel, byggs ut snabbt.**
- **Hybrid/generator**
- **Solpaneler**
- **Bränsleceller**
- **Propellerladdning**
- **Batterier,**
 - **Litium,**
 - **AGM**

Market

Boat Market

A motor from AvantMarine could be mounted in about 60 % of all sailboats in the world and in about 10 % of all motorboats in the world.

New production today.

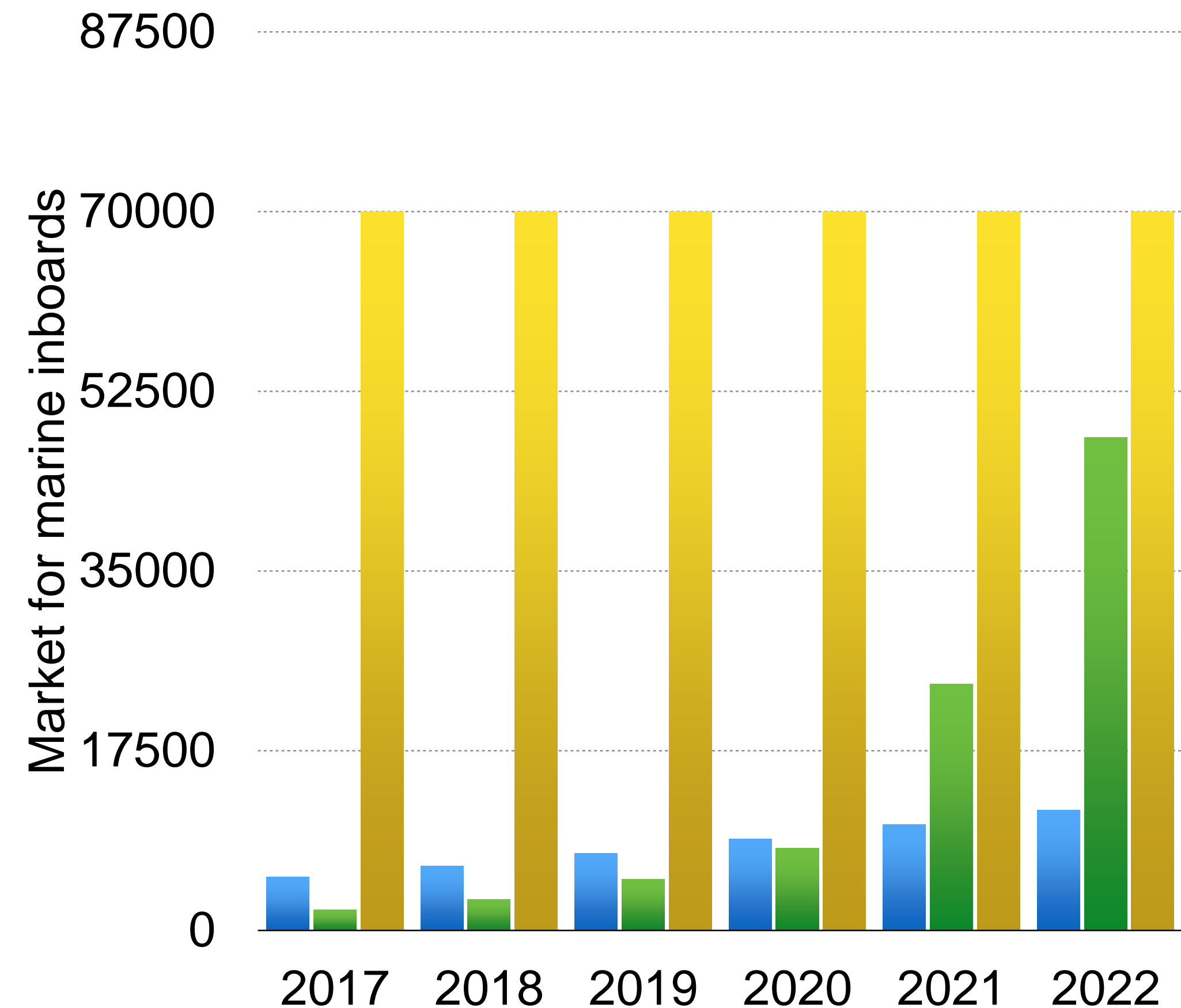
- 20 000 Sailboats with an inboard
- 20 000 Motorboats with an inboard

Existing fleet today. appr. 2,5 % shall replace their motor

- 3 milj. Sailboats with an inboard
- 4,5 milj. Motorboats with an inboard

Commercial

- Selfgoing vessels for collecting garbage and other environmental work
- Oil spill collection vessels
- Shuttels

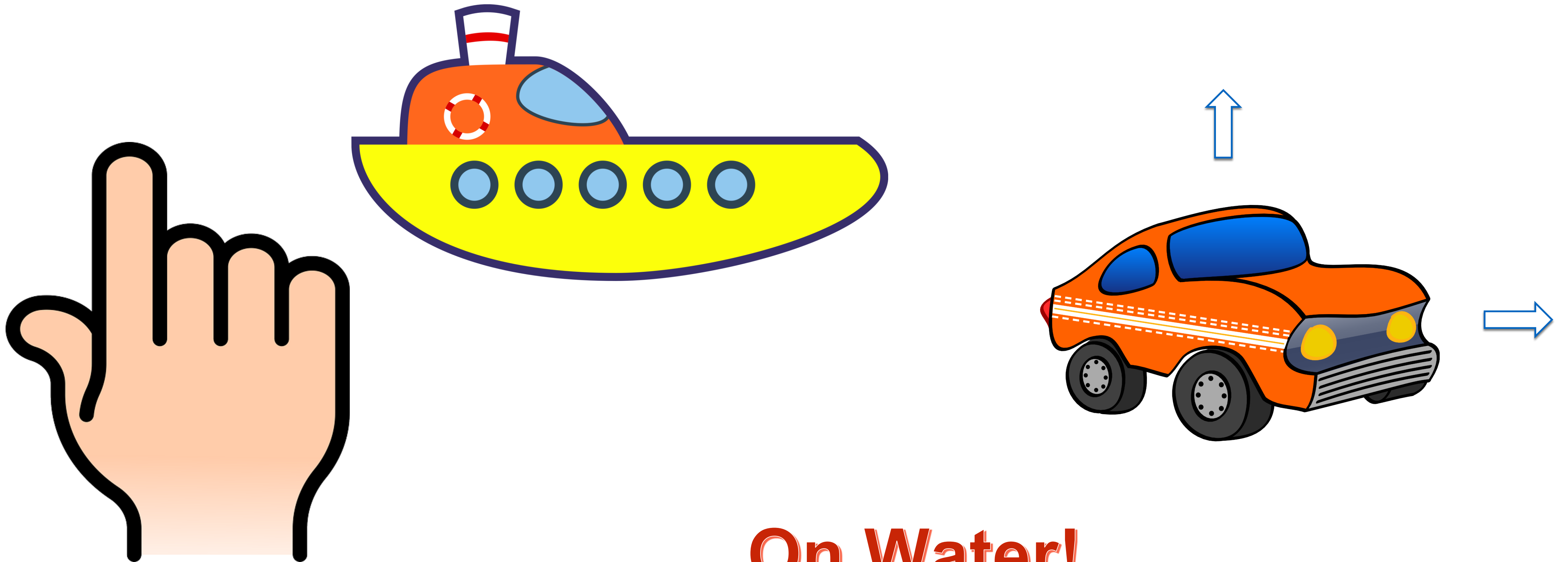


Comparison El/Diesel-propulsion

Technology	Energy- cost	Service- cost	Total cost/Nm
El. prop.	0,25 kr	1,7 kr	1,95 kr
Diesel prop.	6,5 kr	7,8 kr	14,3 kr

A AVANT MARINE

Flytta en bil med ett finger??



On Water!

AVANT MARINE

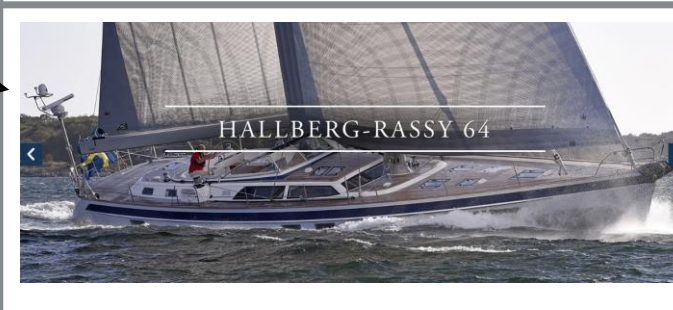
Commercial



Minikraftverk mm...



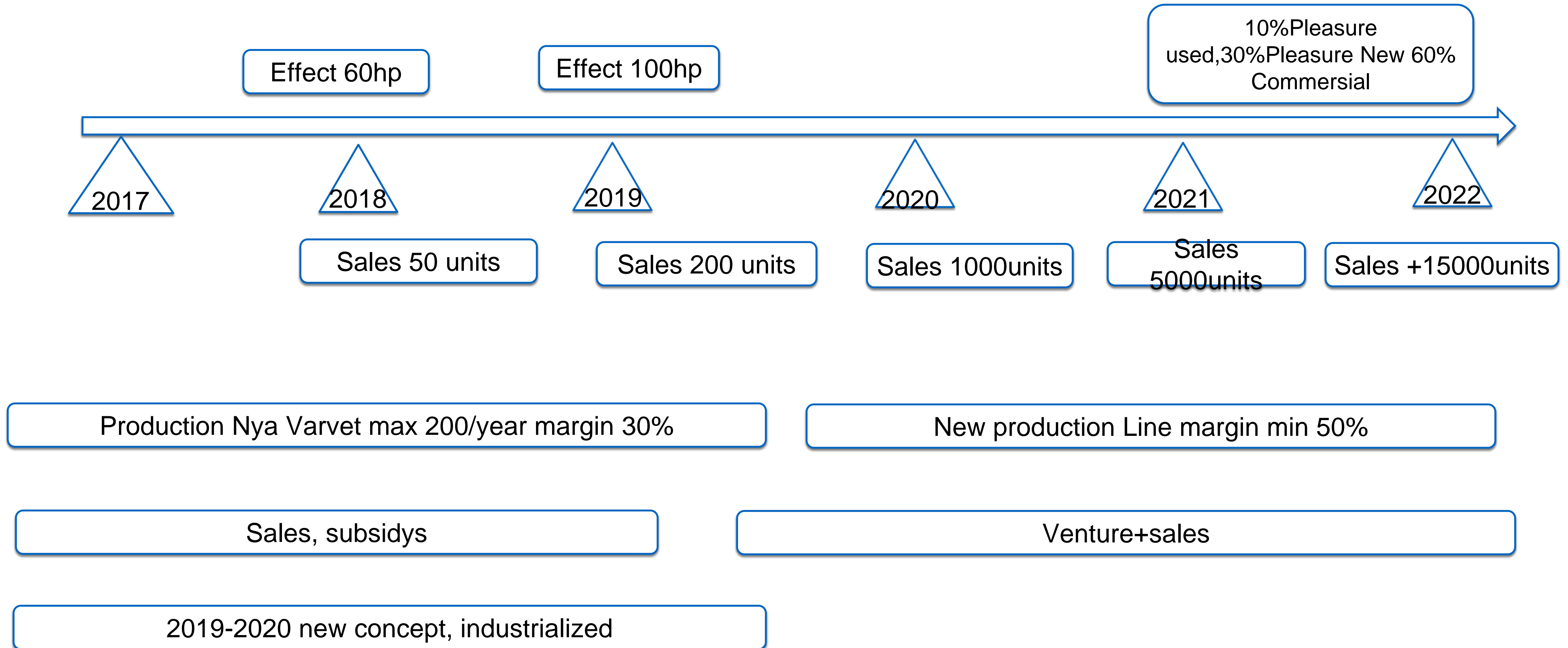
Pleasure



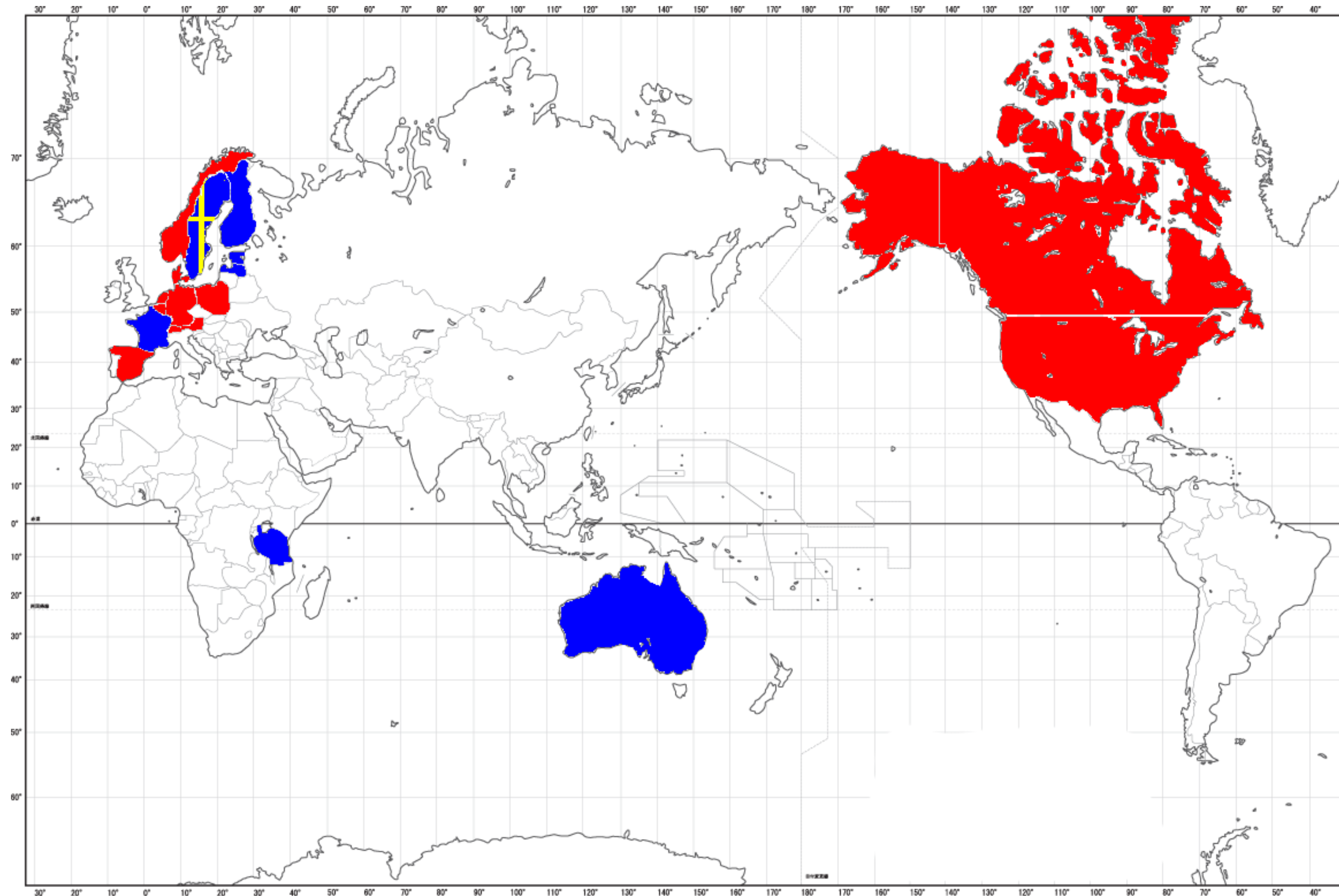
Sverige vs Världen

- **Tyskland, Schweiz, Österrike har redan förbud/restriktioner i sjöar**
- **Kommer lagkrav även i Holland**
- **Hastighetsbegränsning på sjön i Europa**
- **Stort intresse från EU kommissionen**
- **Börja använda vattenvägar i städer i högre utsträckning igen**
- **Autonoma skyttlar**
- **Avant Marine vann SME 2020 Phase 1, Projekt med Lindholmen Science Park, Chalmers, RISE Viktoria, SSPA med flera.**
- **Testbäddar, demonstratorer**

Future 2017-22



Network



Minkraftverk mm...

AVANT MARINE

Industralize

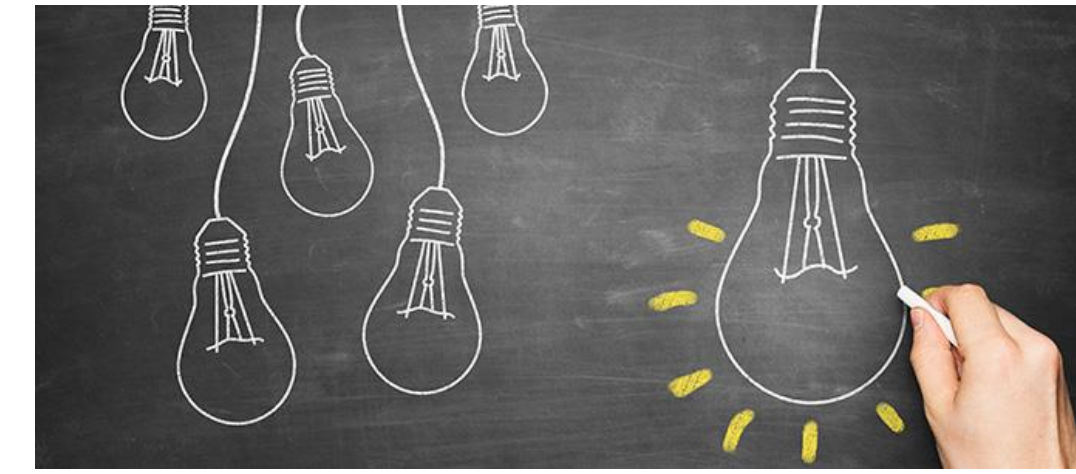


Educate



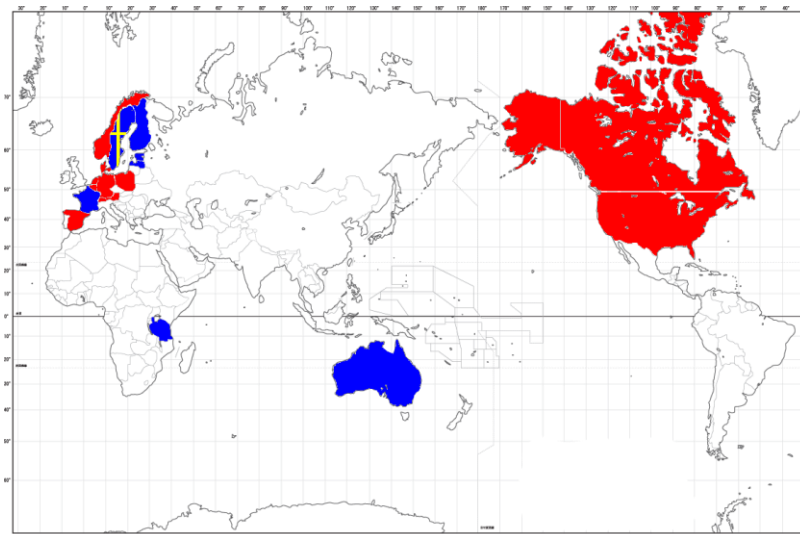
Trail

Product development

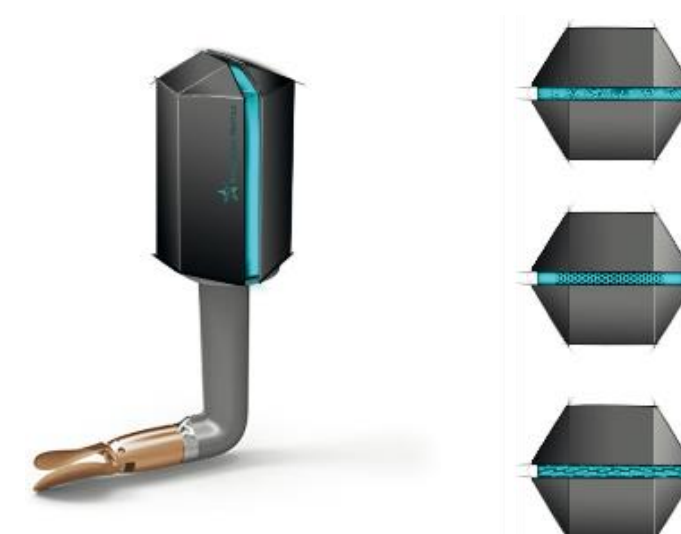


Minkraftverk mm...

Distribute



Market



Cooperate

