

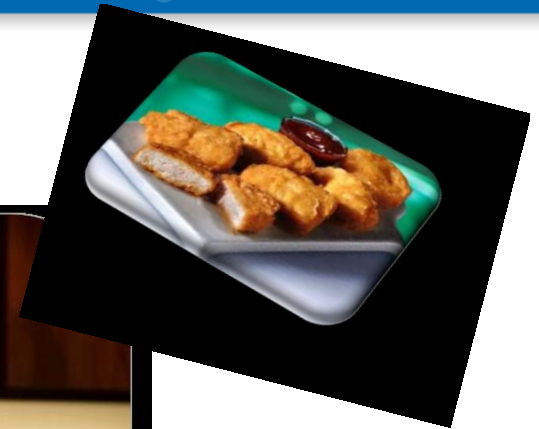
Evidence Based Training *is designed to maximise learning and minimise formal checking.*



R



Meny



Aptit



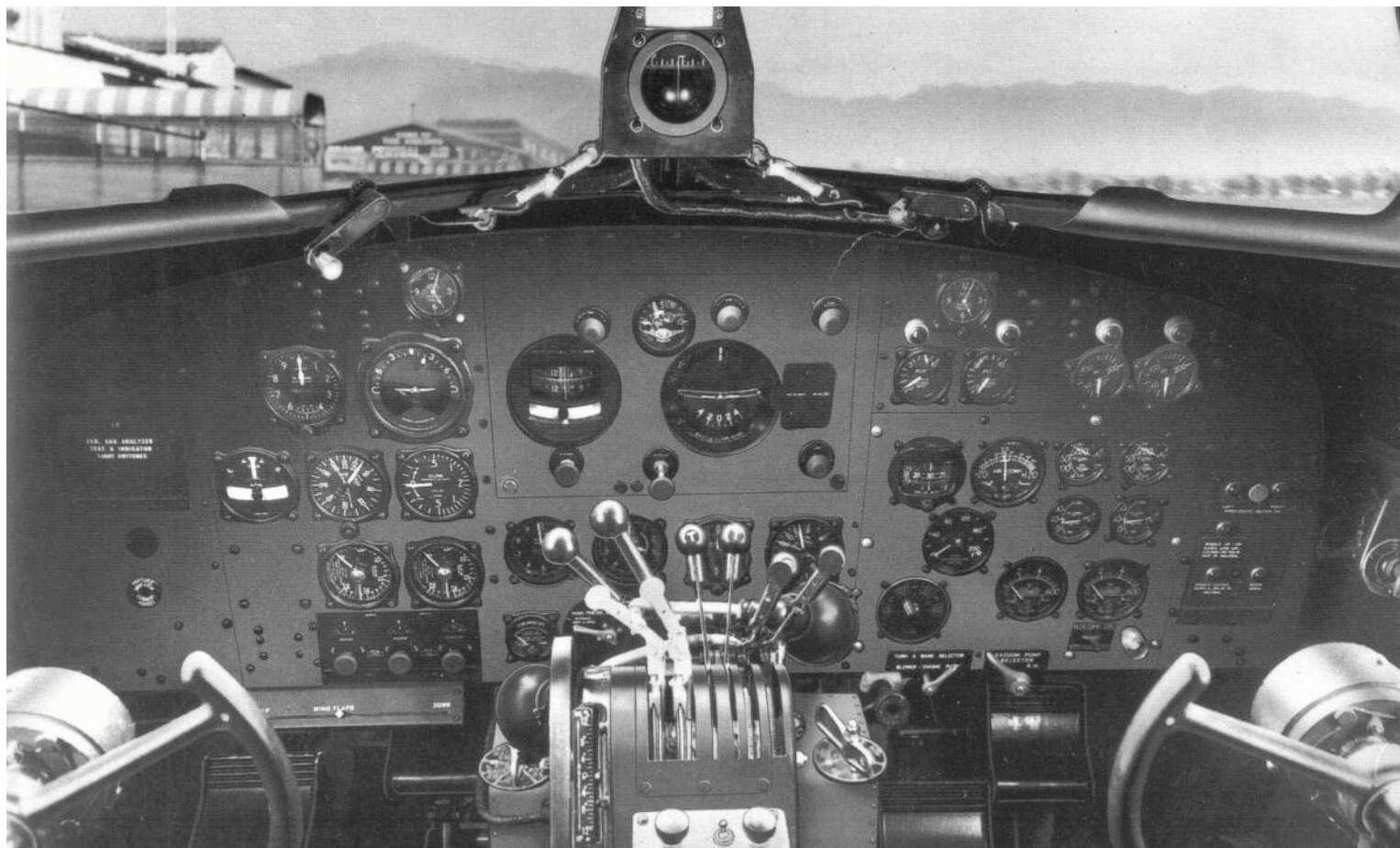
Dagens Meny

Chef's Menu

Flight preparation
Before take-off check
Engine Failure at V1
Rejected take-off
Instrument arrival
Engine-out approach
Non-precision approach
Engine-out landing



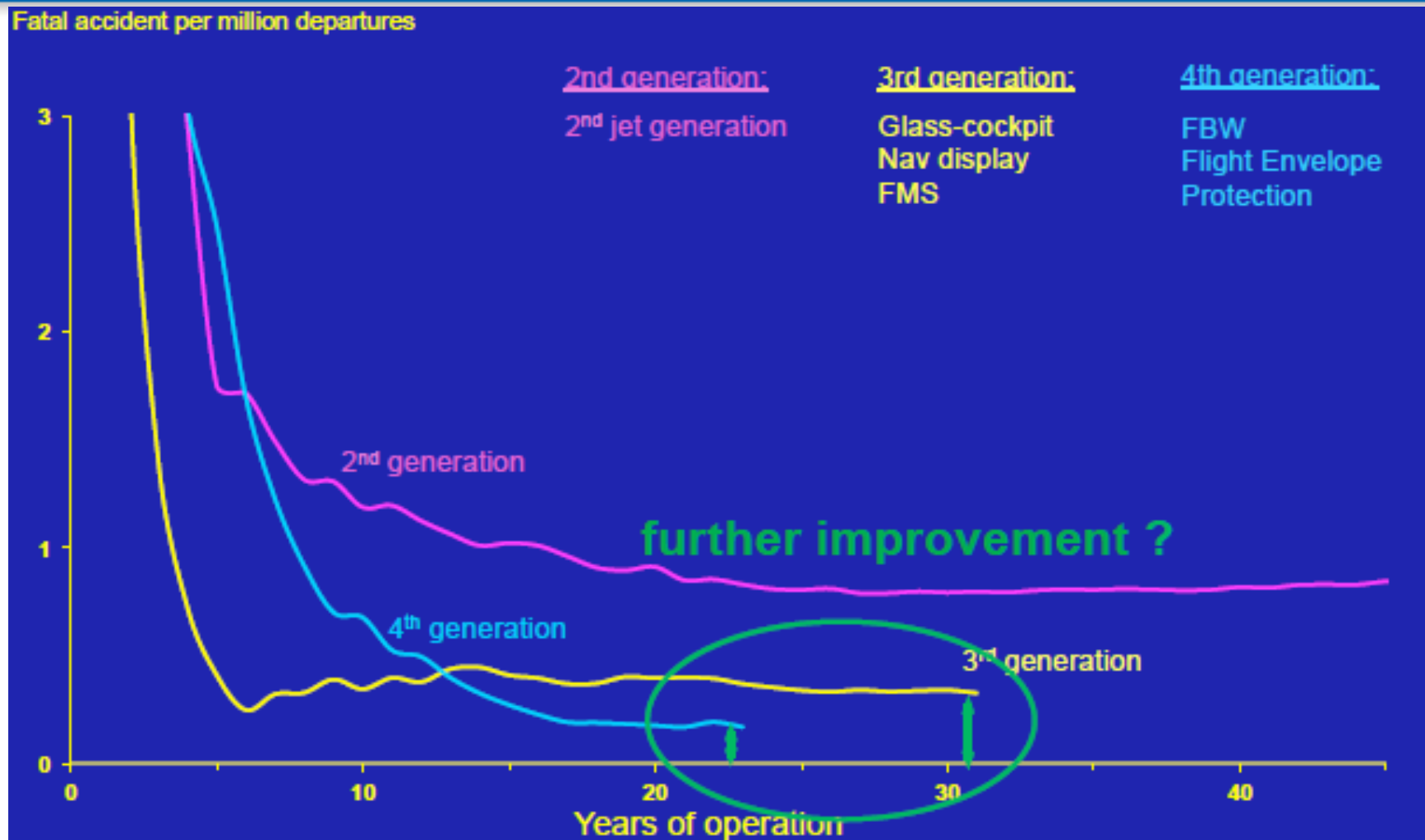
Does one-size fit all?



"Stakeholders"



Jämförelse mellan olika flygplansgenerationer



Indata EBT



	Evaluation	Manoeuvres Training	Scenario Based Training
Objective	Assess competence Identify training needs	Train manoeuvre skills to proficiency	Develop resilience by exposure in a learning environment
Conduct	Line Orientated Evaluation	e.g. RTO, Engine-out manoeuvre, and Go Arounds (New)	Line orientated training

EBT Kärnkompetenser

- Application of procedures
- Communication
- Aircraft flight path management (Manual and Automation)
- Leadership and Teamwork
- Problem solving
- Situation Awareness
- Workload

Develop a new paradigm for competency based assessment and training of airline pilots based on evidence



Phase 1
Recurrent



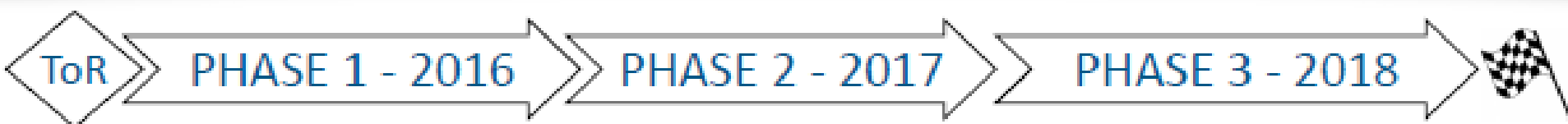
Phase
Type Rating

1. ICAO Doc 9995 Manual of EBT
2. EASA EBT Implementation

EASA Projektets Utrullning



Quick project overview - NPA -



EBT: OPC/LPC + SPA

EBT: instructor training

Concept paper CB Training

NCC: AMC & GM

ORO.FC section 1

EBT: OCC+ Initial type rating

EBT TRI/TRE qualification

Concept paper CB Training

EBT: Methodology to add new types into EBT (Helicopters + Business jets)

Aeroplanes: implementation issues (see master task list)

Helicopters: implementation issues (see master task list)

Helicopters: EBT